


Part number

CX 03 4M



Brief description:

male insert, 3 poles, crimp connections, 40A 690V, 6kV, 3, 1 module, modular units series MIXO

Product description		Approvals / Standards	
Model	male insert	Reference standard	EN 61984 (2001-11)
Version	Crimp connection	Quality mark	 , EAC
Product type	for male contacts 40A	Conformity	CQC, CE
Family	MIXO series, customizable inserts	General ordering information	
Size	1 module	EAN13 code	8015747041720
N. of poles	3 poles	Tariff number	85369095
Technical data		Packaging Information	
Current	40 A (A.C. and D.C.)	Packaging length	180,00 mm
Voltage	400 - 690 V	Packaging height	130,00 mm
Rated impulse withstand voltage	6kV	Packaging width	150,00 mm
Pollution degree	3	Packaging weight	1,00 kg
Operating temperature range (min, max)	-40°C ... +125°C	Packaging volume	3,51 dm ³
IP degree of protection	IP20 without enclosure; IP65/IP66/IP67/IP68 with enclosure	Packaging description	Carton box
Further technical details		Packaging quantity	60 Pcs
Characteristics according to EN 61984	40A 400/690V 6kV 3	Packaging EAN code	8015747221184
Insulation resistance	≥ 10 GΩ	Sub-packaging length	35,00 mm
Rated voltage according to UL/CSA	600V	Sub-packaging height	40,00 mm
UL 94 flammability rating	V-0	Sub-packaging width	155,00 mm
Weight	0,01 g	Sub-packaging weight	0,17 kg
		Sub-packaging volume	0,22 dm ³
		Sub-packaging description	Carton
		Sub-packaging quantity	10 Pcs
		Sub-packaging EAN barcode	8015747041737

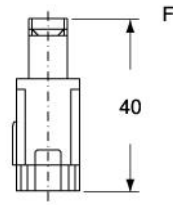
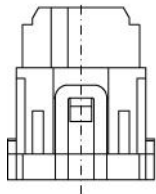
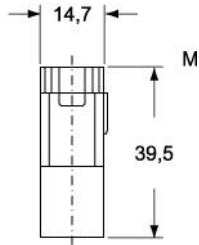
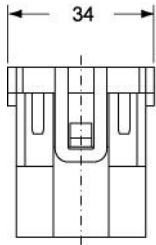
Part number

CX 03 4M

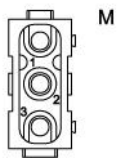
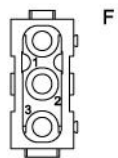


Catalogue drawings

CX 03 4M

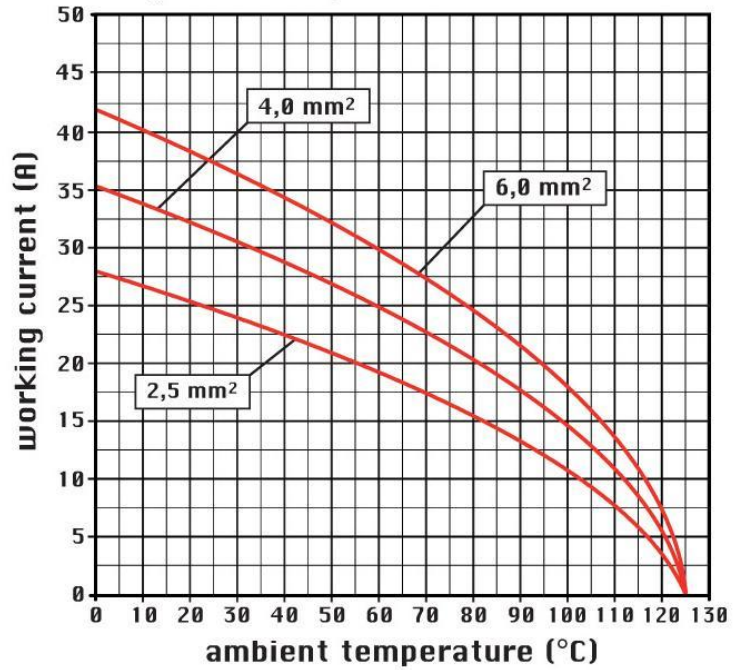


CX 03 4F



Catalogue drawings

diagram CX 03 poles



Notes

CX 03 4 inserts:

- characteristics according to EN 61984:
(40A 400/690V 6kV 3)
- footprint 1 module
- for maximum current load, see the insert load curve section
- for contact crimping instructions, please see the crimping tool section (40A contacts, CXF and CXM series)

the modular inserts must be installed in suitable frames which in turn are installed in traditional housings or COB panel support